

# FRICKE

## Landmaschinen

**Fricke Landmaschinen GmbH Bockel - Gyhum**  
Wichernstraße 2  
27404 Bockel - Gyhum  
Tel: 0049 (0) 4281712710  
Fax: 0049 (0) 4281712717

### **Kotte PT 18.500 [383002302000078]**

Year of manufacture: 2010

Date: 21.05.2026

Design:

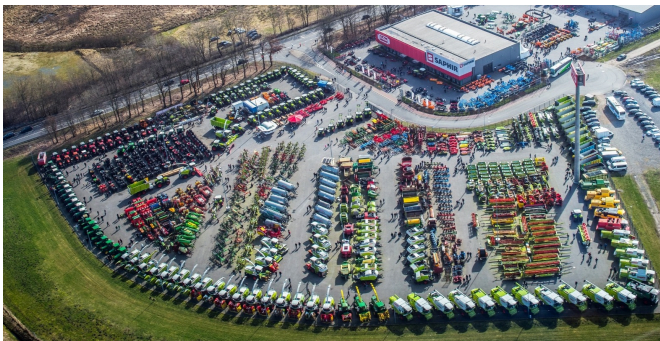
Manure technology + manure technology

Category:

Pumpass

**€ 49,000.<sup>00</sup>**

plus VAT 19% (€ 58,310.<sup>00</sup> Gross)



### **Equipment**

<b>Mounting device for application technique</b>	Schleppschlauch
<b>Attachment</b>	below
<b>Working width</b>	24
<b>Design</b>	pump
<b>Filling system</b>	saugarm
<b>Container material</b>	Steel
<b>Tyres</b>	750/60 R30,5
<b>State</b>	Used
<b>Air brake</b>	✓
<b>Landing gear</b>	Tandem axle
<b>Suspension</b>	mechanical
<b>Foreign body separator</b>	✓

### **Description**

- Tires 750/60 R30.5
- K80 bottom hanger
- Cardan shaft
- Air brake
- Load sensing
- Suction arm front right
- Vogelsang rotary lobe pump VX186-260Q Year of manufacture 2023
- Forced steering
- Roto Cut
- Rear linkage
- Vogelsang drag hose design

<b>Filling quantity</b>	17.700,00
<b>hydr. foldable</b>	✓
<b>Pump type</b>	Rotary lobe pump
<b>Technical condition</b>	Good
<b>Distributors</b>	schleppschauch
<b>Forced steering</b>	✓